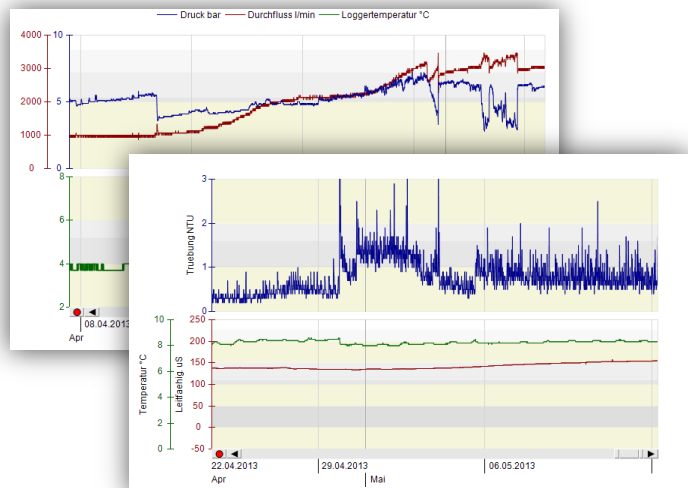
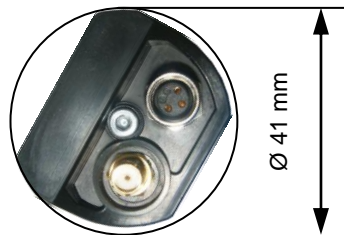
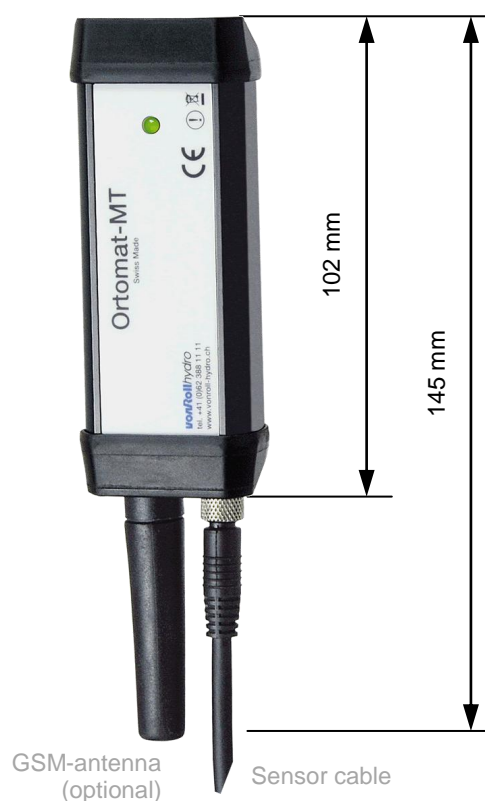
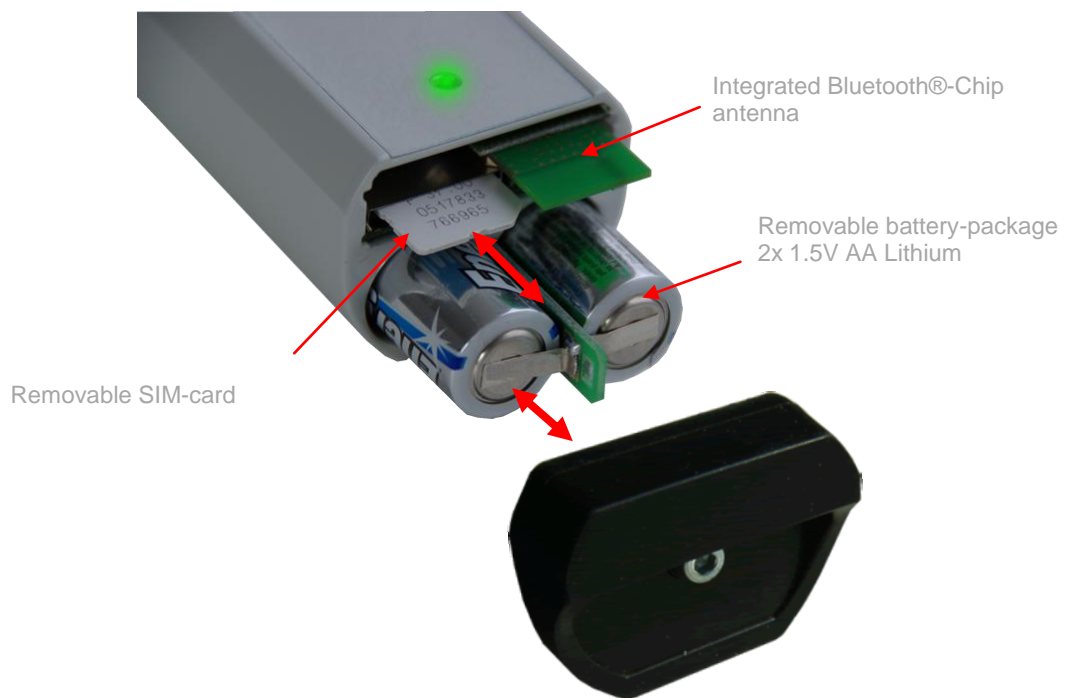


Technical Datasheet **ORTOMAT-MT UI** (multi transmitter)

GPRS-Datalogger

Weight	:	150 gr.
Measure	:	d= 41 mm x 102 mm
Housing	:	- Aluminum, hart ematal protection, black - End caps made of rubber
Environmental protection	:	IP 68
Power supply	:	3V / 2.9Ah (2x AA lithium cell; removable)
Battery lifetime	:	2-3 years (dependant on configuration)
Radio technology	:	Bluetooth® + GSM (bi-directional)
Data reading	:	- selective Bluetooth®-connection - selective GMS-connection via GSM-modem - automatic GPRS data transfer on FTP-server - automatic alarm- and status-message on mobile-phone
Data transfer rate	:	Bluetooth® (19200 Baud)
Data memory	:	70'000 measuring points
External antenna terminal	:	SMA-f for GSM-antenna
Communication interface	:	wireless





Available measuring modules

Typ UIP 2x analog- / 1x pulse input incl. external power supply

Socket 6-pin	1 brown	Channel 1	4..20mA or 0..2Vdc (Ri 200 Ω)
	2 white	Channel 2	4..20mA or 0..2Vdc (Ri 200 Ω)
	3 blue	Channel 3	pulse input (Pulldown; >100 Ohm)
	4 black	GND (0V)	
	5 grey	external power supply 5..30Vdc / max. 250mA	
	6 pink	sensor supply 0..25Vdc / max. 80mA	

Typ UIP2 1x analog- / 2x pulse input incl. external power supply

Socket 6-pin	1 brown	Channel 1	4..20mA od. 0..2Vdc (Ri 200 Ω)
	2 white	Channel 2	- -
	3 blue	Channel 3	pulse input (Pulldown; >100 Ohm)
	4 black	Channel 4	pulse input (Pulldown; >100 Ohm)
	5 grey	external power supply 5..30Vdc / max. 250mA	
	6 pink	sensor supply 0..25Vdc / max. 80mA	
	S screen	GND (0V)	

Typ UI4 4x analog input incl. external power supply

Socket 6-pin	1 brown	Channel 1	4..20mA od. 0..2Vdc (Ri 200 Ω)
	2 white	Channel 2	4..20mA od. 0..2Vdc
	3 blue	Channel 3	4..20mA od. 0..2Vdc
	4 black	Channel 4	4..20mA od. 0..2Vdc
	5 grey		external power supply 5..30Vdc / max. 250mA
	6 pink		sensor supply 0..25Vdc / max. 80mA
	S screen		GND (0V)

Typ K 1x Switch contact monitoring

Socket 3-pin	1 brown	Channel 1	- -
	2 blue	Channel 2	switch input
	3 black	GND (0V)	

PC-Software

Manufacturer/License	:	vonRoll hydro
Name	:	ORTOMAT-MT PC-Software
Programming language	:	C# (Microsoft C Sharp)
Installer	:	InstallShield 2009

System requirements (OS)

Operating System	:	MS Win XP, VISTA, 7, 8
Required ports	:	min. 1x USB (version 1.0 or higher)
Display resolution	:	1280x1024
Additional software	:	.NET Framework 4.0 (included)
Free memory	:	20-30 MB (depends on number of measuring points / data)